

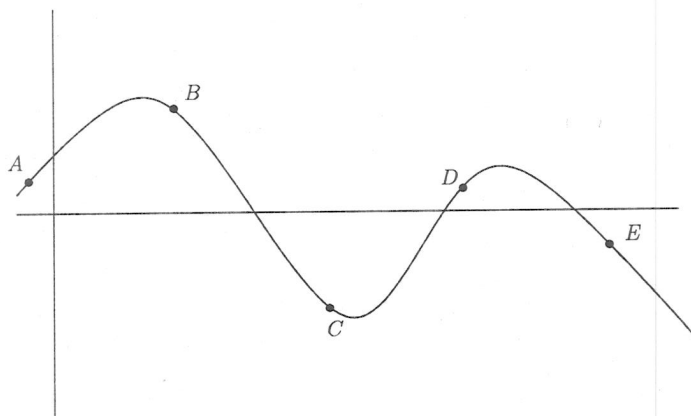
(1) For the graph below

1 pt (a) At which of the labeled points is the derivative f' positive?

Positive f' points are: A, C

1 pt (b) At which of the labeled points is the second derivative f'' positive?

Positive f'' points are: C



1 pt (2) Draw the graph of a function with $f' < 0$ and $f'' > 0$

decreasing concave up



1 pt (3) Draw the graph of a function that is increasing and concave down.



1 pt (4) Draw the graph of a function that is increasing at an increasing rate.

